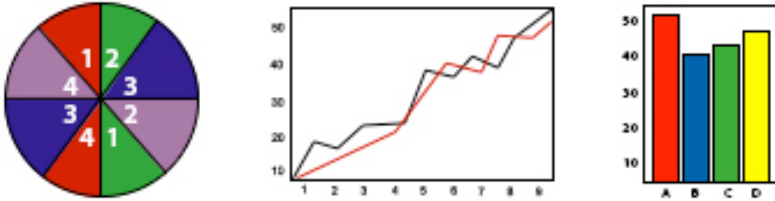


There are three basic types of graphs: circle, line, and bar graphs.

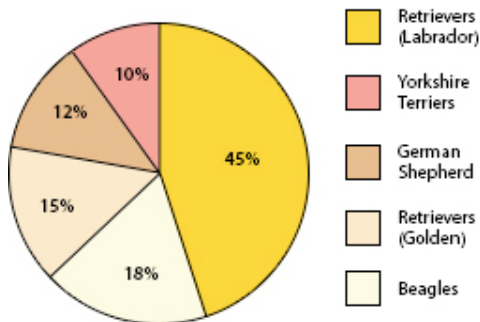


When working with graphs, the first step is to read the title. Also read subtitles, axis information, and any legend information provided. Then, identify the specific information illustrated by the graph.

Select the best answer for the following questions and type it on the line provided.

Questions 1 – 4 refer to the following circle graph. The data represented in the graph is based on AKC registrations in the metro area for 2007.

Most Popular Dog Breeds in 2007



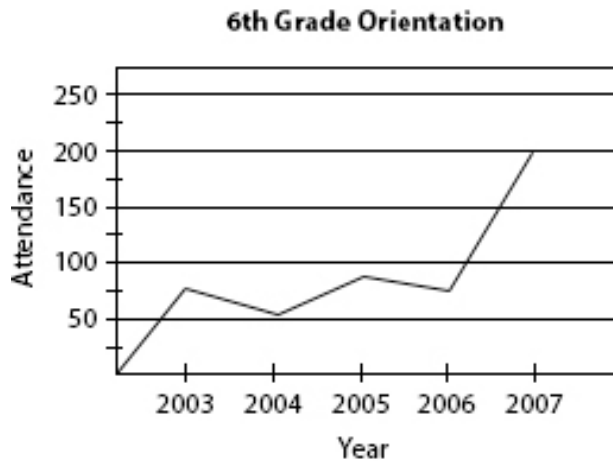
1. What percentage of people in the metro area completed registrations for German Shepherds? _____
 - a. 45%
 - b. 17%
 - c. 12%
 - d. 10%

2. What percentage of people registered a Labrador Retriever over a Beagle as the most popular dog breed?

 - a. 33%
 - b. 30%
 - c. 27%
 - d. 35%

3. Terriers and German Shepherds make up what percent of the most popular dog breeds? _____
- a. 22%
 - b. 33%
 - c. 25%
 - d. 30%
4. If the American Kennel Club (AKC) used the registrations of 1,500 pet owners to establish their Top 5 list, how many people registered a Yorkshire Terrier? _____
- a. 150
 - b. 180
 - c. 225
 - d. 270

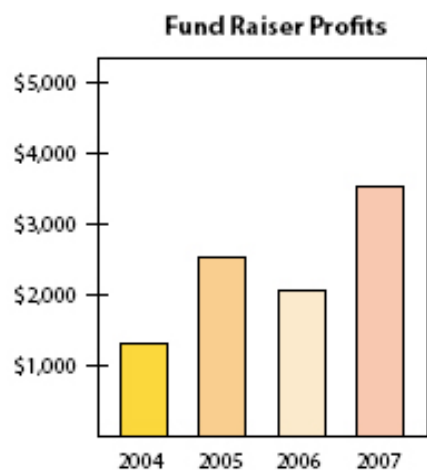
For questions 5 - 7 Use the following line graph.



5. In what year did the school have the best attendance for the 6th grade orientation? _____
- a. 2003
 - b. 2005
 - c. 2006
 - d. 2007
6. From 2004 and 2006, what was the percentage of increase in attendance? (Round to the nearest hundredth) _____
- a. 36.36%
 - b. 26.67%
 - c. 36.34%
 - d. 26.76%

7. Between what two years was there the greatest decrease in attendance? _____
- a. between 2003 and 2004
 - b. between 2004 and 2005
 - c. between 2005 and 2006
 - d. between 2006 and 2007

Use the Bar chart below to answer questions 8-10.



8. What is the approximate amount of profit earned from the fund-raiser in the year 2006? _____
- a. \$1,000
 - b. \$1,500
 - c. \$2,000
 - d. \$2,500
9. 2004 fund-raiser profits are approximately what percentage of fund-raiser profits earned in 2007? (Round to the nearest hundredth) _____
- a. 36%
 - b. 35.71%
 - c. 35%
 - d. 35.7%
10. Which of the following statements is true in the bar graph above? _____
- a. The fund-raiser showed its greatest profits in the year 2006.
 - b. The fund-raiser showed approximately the same amount of profits each year.
 - c. The greatest increase in profits occurred between 2005 and 2006.
 - d. There was a \$1000 increase in profits between 2005 and 2007.